

Concerto Op.6, No. 2

Arranged by Frederic Palmer

Arcangelo Corelli
(1653-1713)

Vivace 5 2

10 **Allegro** 2 15

20

25 30

35

40 **Adagio** 2 45

50 **Vivace** 55

60 **Allegro** 2

65 70

75

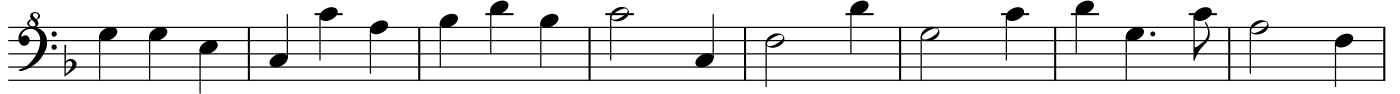


80

85



90



95

Adagio

Largo andante 100

2

3



105



Allegro

4

5

2



10



15

20



25



30

35

40

45

50

55 **Adagio**

Grave 5 **Andante largo**

10

15

Allegro 20 25

30

35 *tr.* 40

45 2

50

55 *tr.* 60

65 2

70